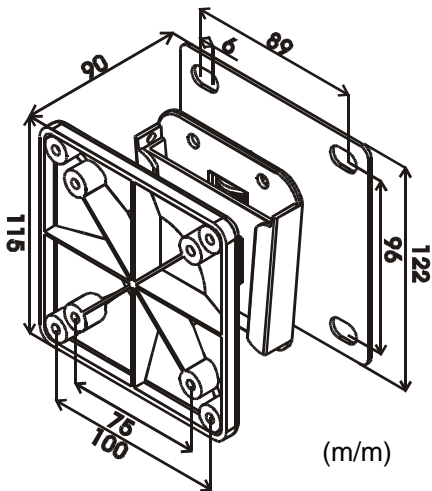


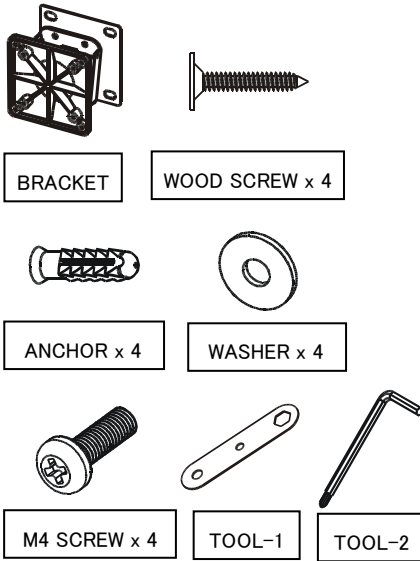


1. Please read this manual carefully before installation and install by following the instructions. Please keep this manual for future reference.
2. The manufacturer shall not be responsible legally for any damage to this product that results from accident, abuse, misuse, natural or personal disaster, or any unauthorized disassembly, repair or modification.
3. The design of the wall mount bracket is designed for installing and removing easily. The manufacturer shall not be liable to the damage of equipment and personnel injuries due to human factors or natural disaster, such as earthquake and hurricane.
4. The wall mount bracket must be installed by professional personnel.
5. At least two persons are needed to install or remove the product in order to prevent from any hazard caused by falling objects.
6. Please check carefully before installation the area where the wall mount will be installed.
 - ⊙ Avoid any place with high temperature or humidity or any place where will contact water.
 - ⊙ Do not install the product close to the vents of air conditions and avoid dusty and fummy place.
 - ⊙ Do not install on inclined wall and irregular surface. Please install on vertical wall.
 - ⊙ Do not install at place subject to vibrations and shocks.
7. Please make sure the space around the display is enough for installation.
8. Please make sure the wall is strong enough to sustain the weight at least four times the total weight of the display and the wall mount bracket. Also make sure the wall could survive the earthquakes and other shocks. To ensure safety and avoid accidents, please choose the durable and highly safety place.
9. Do not modify any accessory, design or structure. Do not use broken parts. Contact the local distributors if there is malfunction or fault.
10. Tighten all screws (do not screw with excess force to prevent the screw, thread, wall mount bracket and the display from damage).
11. The maximum weight of panel display or plasma TV the wall mount bracket can take is 15kg (33lbs.)
12. Once the wall mount bracket is removed, the drilled holes and bolts will be left on the wall or the applied position. Stains may occur after long term use.
13. To the extent of permitted by applicable law, the manufacturer disclaims any implied warranty of merchantability or fitness for a particular purpose. In no event will the manufacturer be liable to the purchaser or to the user of the product for any damages, expense, lost revenues, lost savings, lost profits, or any other incidental or consequential damages arising from the purchase, use or inability to use the product, even if the manufacturer has been advised of the possibility of such damages.
14. Specifications are subject to change without notification.
15. Mounting bracket complies with VESA 3" (75mm x 75mm) and 4" (100mm x 100mm). For more information about the VESA standard please visit www.vesa.org
16. As TFT manufacturers are constantly releasing new monitor models, we do not accept responsibility if the VESA mounting does not comply with the international standards.
17. In order to attach the Arm to the rear of the TFT monitor, the monitor must be removed from its existing base (if it is not already separated)-see the computer monitor manufacturer's literature for details .The arm is designed for mounting TFT LCD FLAT DISPLAY only.

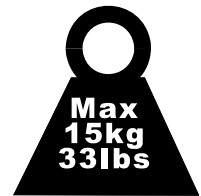
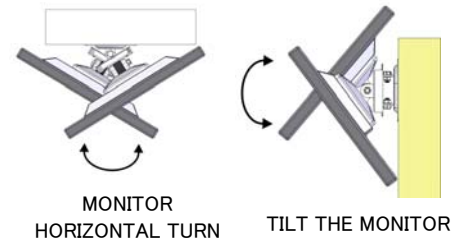
Specification



Accessories

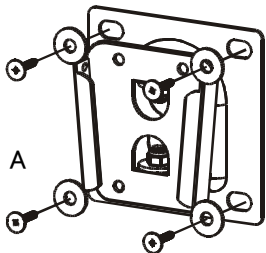


Characteristics

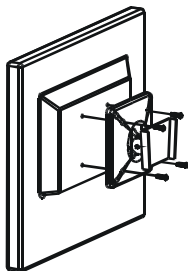


Installation

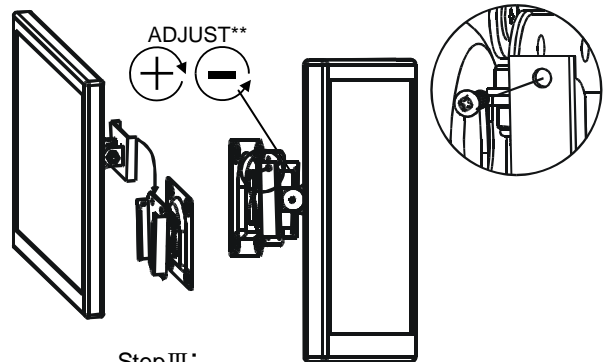
Follow the installation carefully



Step I .
 A: Put 4 WOOD SCREWS through 4 WASHERS into each hole and screw tight on the position you prefer.*



Step II .
 B: Screw the BRACKET with 4pcs of M4 SCREWS on the back of your monitor.



Step III :
 C: Assemble A with B. Please screw M5 SCREW on the wall mount to prevent the display from falling.**

* The enclosed wood screws only apply to the mounting positions which are wooden material. If the material of mounting position is cement, please drill holes with Ø6mm & 25mm depth. Use a hammer to drive the Anchor into the holes on the wall, then fix the Plate on the wall by screwing the wood screws.*

** Using Tool-2 for the NUT and Tool-1 for INNER-HEXAGON SCREW at the same time to adjust the joints to the appropriate tightness you prefer. **
 ★The manufacturer disclaims all liability from damage to computer equipment caused by bad installation and/or improper use. ★