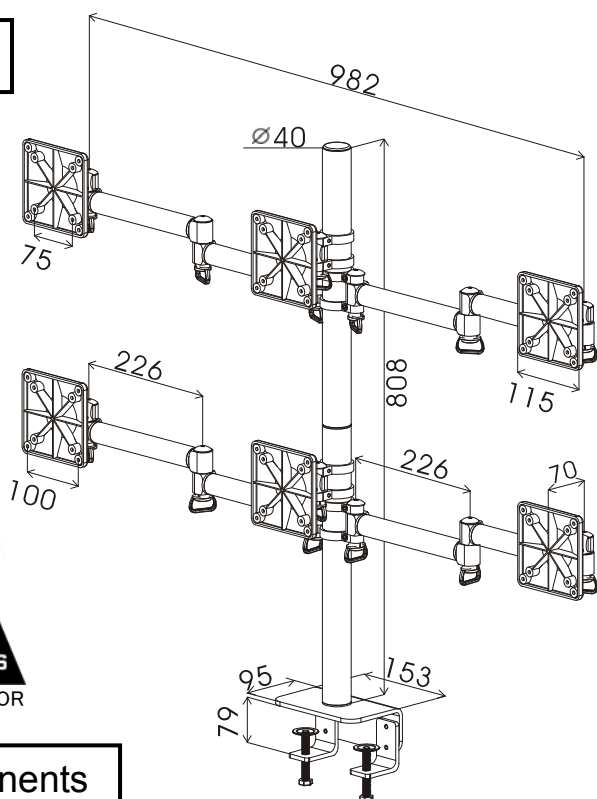




# SPACE MANAGER LCD MONITOR ARM TKLA-6036

PATENT PENDING

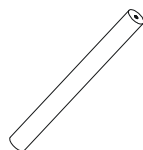
## Specs



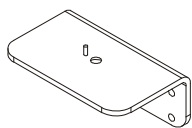
**MAX  
8KG  
17LBS**  
PER MONITOR

## Components

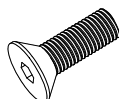
A: MAIN TUBE



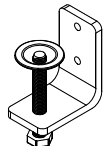
B: CLAMP MOUNT



C: SCREW



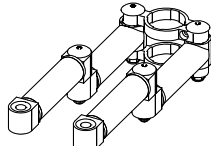
D: CLAMP x 2



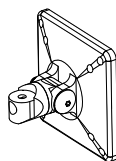
E: PHILLIPS SCREW x 4



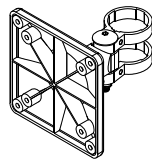
F: ARM x 2



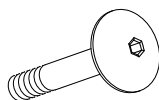
G: BRACKET x 4



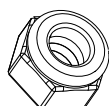
H: PIVOT ARM x 2



I: INNER-HEXAGON SCREW x 4



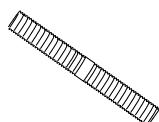
J: NYLON NUT x 4



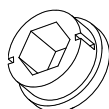
K: UPPER TUBE



L: CONNECT SCREW



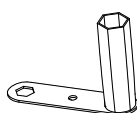
M: PLASTIC CAP x 14



N: PLASTIC CAP x 14



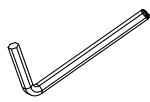
## Tools



TOOL-1



TOOL-2 (4mm)



TOOL-3 (5mm)



TOOL-4 (6mm)

## ▲ Caution

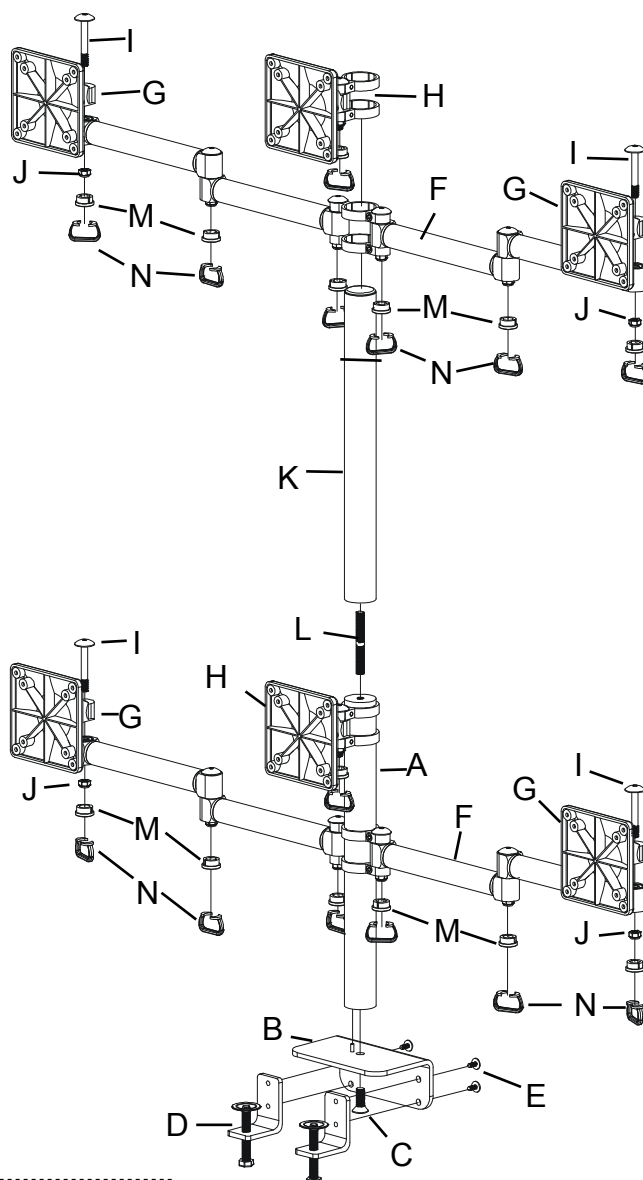
■ Mounting bracket VESA 3"(75mm x 75mm) and 4"(100mm x 100mm). For more information about the VESA standard please visit [www.vesa.org](http://www.vesa.org)

■ As TFT LCD monitor manufacturers are constantly releasing new monitor models, we do not accept responsibility if the VESA mounting does not comply with the international standards.

■ In order to attach the Arm to the rear of the TFT LCD monitor, the monitor must be removed from its existing base (if it is not already separate)-see the computer monitor manufacturer's literature for details.

■ As desk design is different, the monitor arm could not be fixed on some specific material desktops, such as glass desktop or desk top which is too soft to fix the arm. The manufacturer does not take any responsibility for the damages due to the users fixing the arm on unstable desk or table.

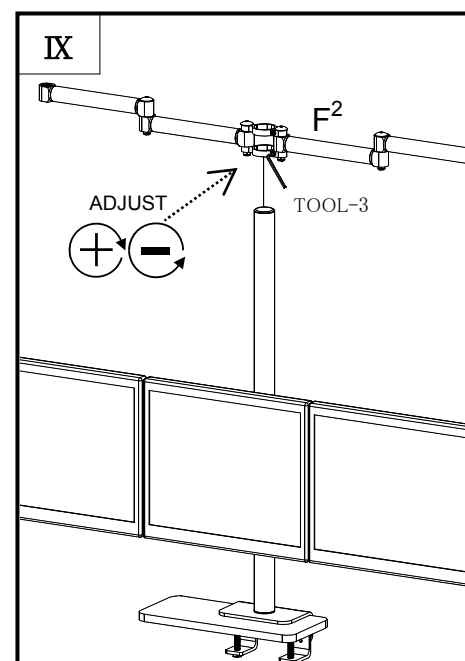
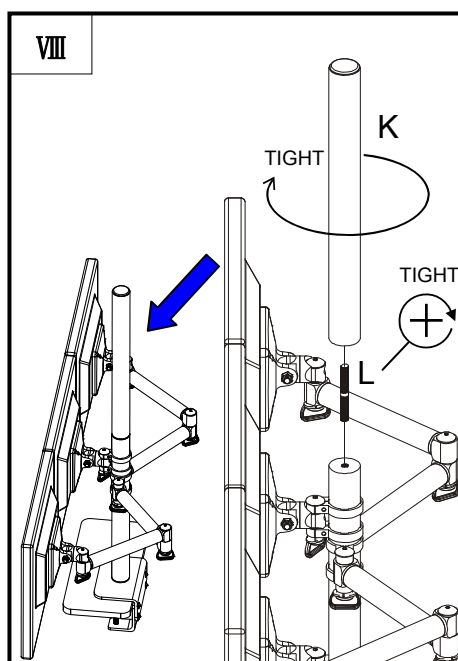
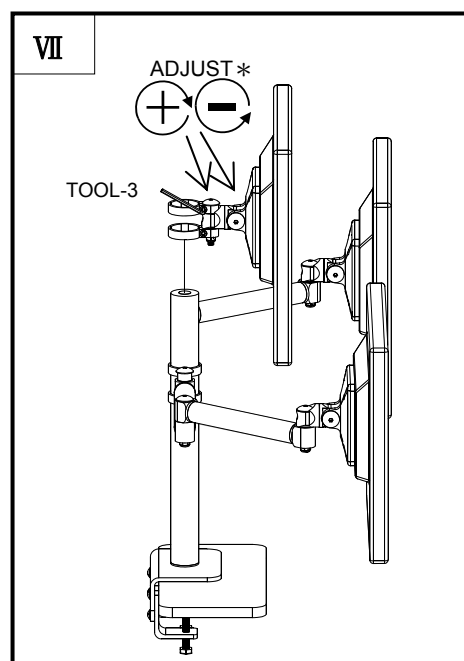
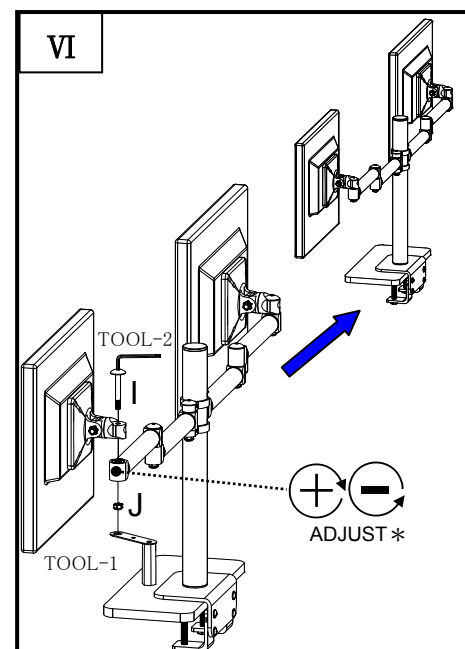
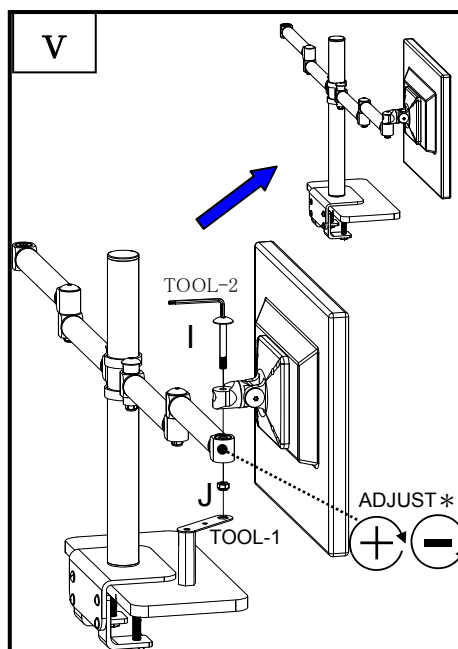
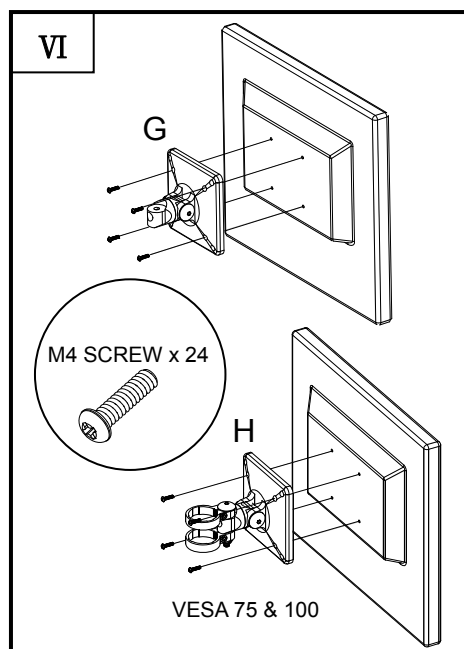
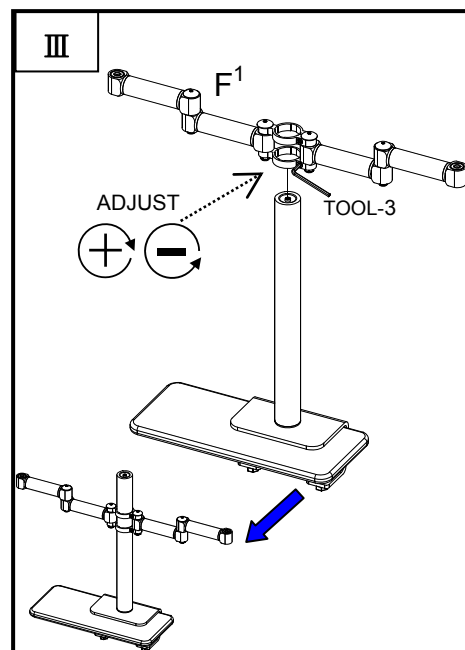
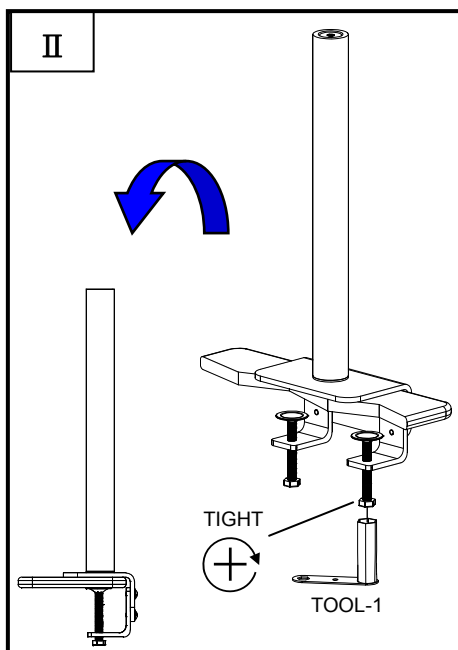
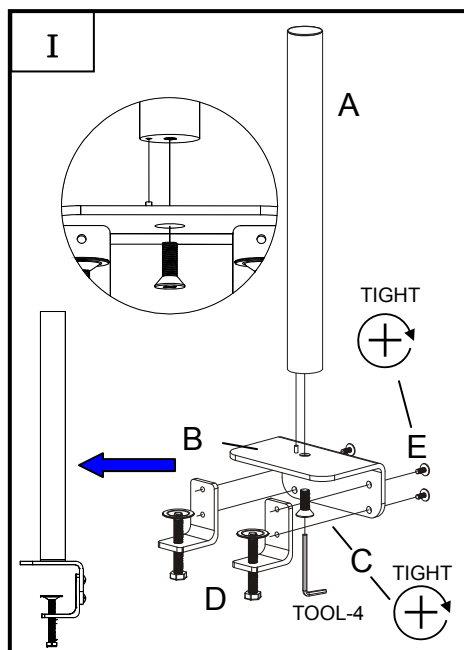
■ When installing the monitor arm, users should screw the joints tightly and make sure the joints will not be too loose when adjusting the arms. It is necessary to check the condition of screws and make sure they are under good condition when the arm is used frequently.

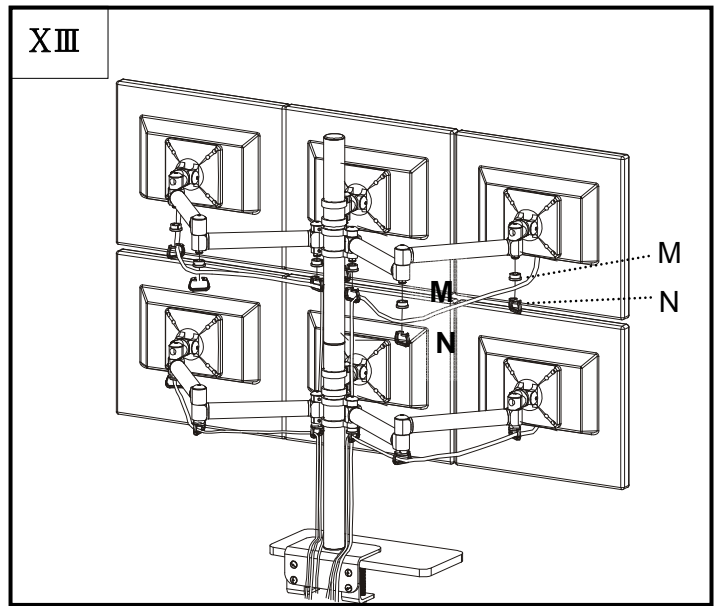
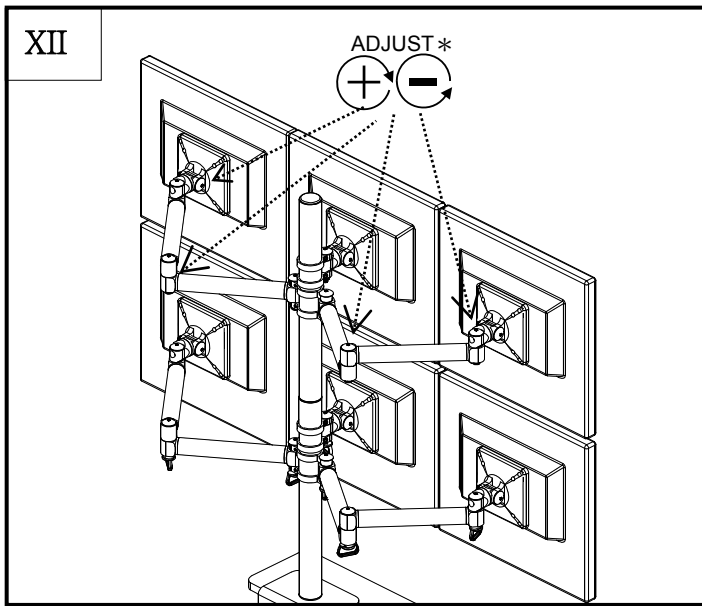
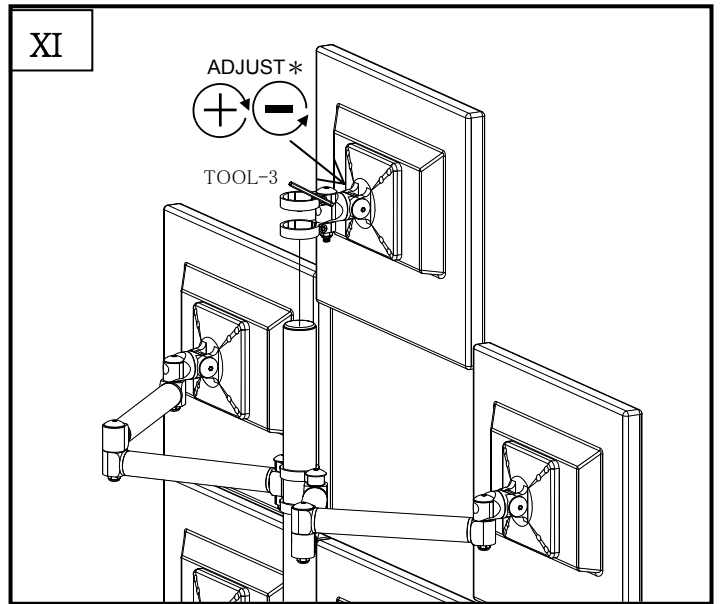
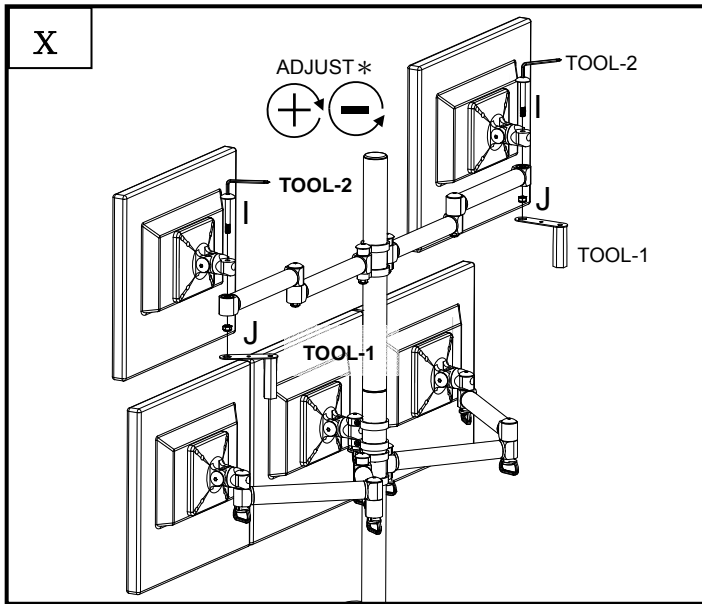


★The manufacturer disclaims all liability from damage to computer equipment caused by bad installation and/or improper use. ★

# Installation

Follow the instruction carefully





\* Using Tool-1 for the NYLON NUT and Tool-2 for INNER-HEXAGON SCREW at the same time to adjust the joints to the appropriate tightness you prefer.

\*\* The screwdriver is a perfect substitute tool for Tool-2 at Step 1 & 4.